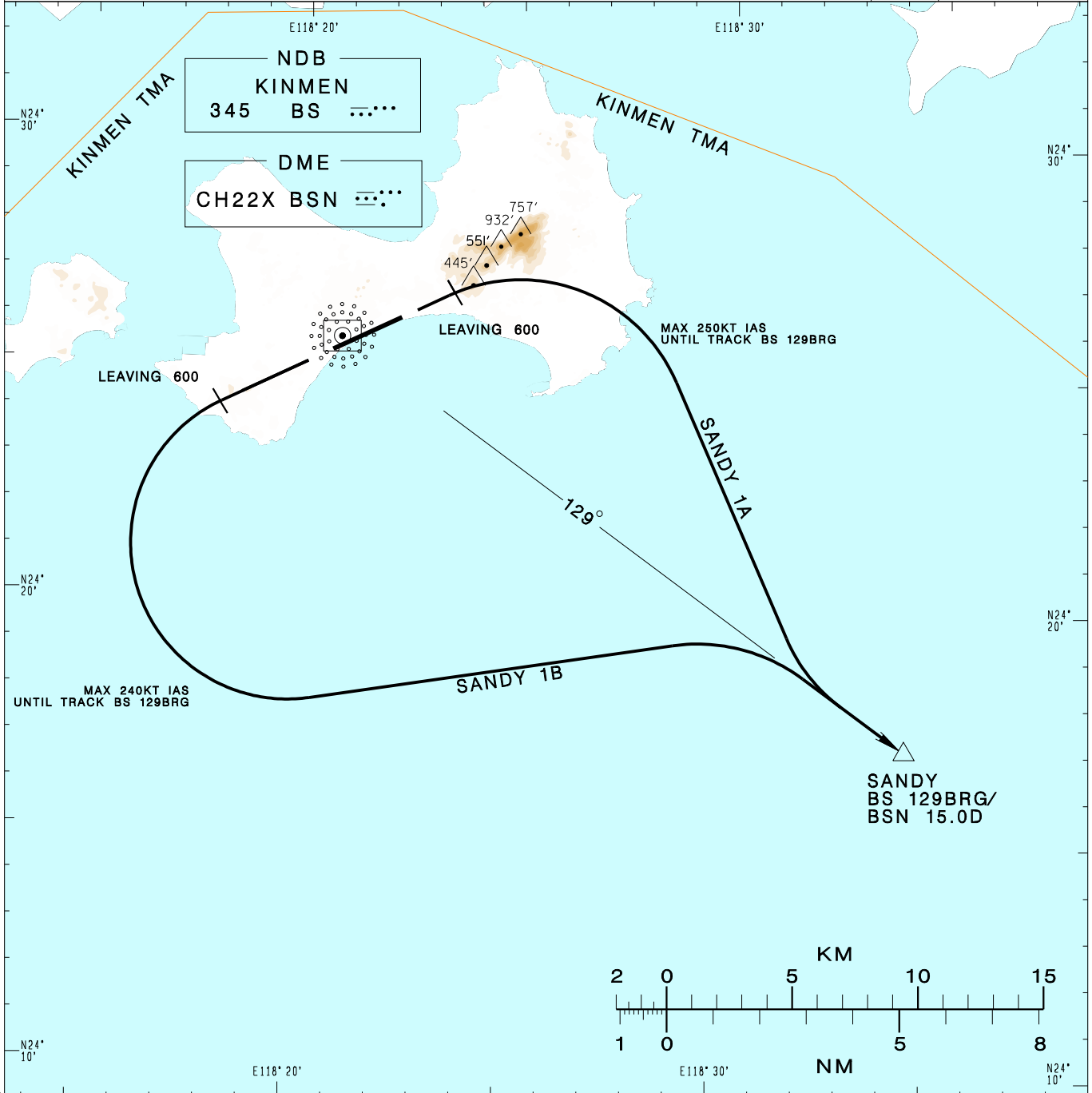


**金門/尚義機場**  
KINMENSHANGYI AD

RCBS SID  
SANDY 1A (RWY 06)  
SANDY 1B (RWY 24)

KAOHSIUNG APP 124.6 133.1	KINMEN TWR 118.0 126.2	ATIS 127.2	VAR 4° W ↑	4800' ○
Apt Elev: 56'	Trans Level: FL130	Trans Alt: 11,000'		
BEARINGS ARE MAGNETIC; DISTANCES ARE NAUTICAL MILES; ELEVATIONS, HEIGHTS IN FEET				MSA ARP 25NM



CHANGES: NEW PAGE NUMBER

**SANDY ONE ALFA DEPARTURE**  
Depart RWY HDG until leaving 600ft, then turn right to track BS 129BRG to SANDY.

**SANDY ONE BRAVO DEPARTURE**  
Depart RWY HDG until leaving 600ft, then turn left to track BS 129BRG to SANDY.

**NOTE**

- SANDY 1A minimum climb gradient : 6.8%(414ft/NM) until 2000ft.
- SANDY 1A speed restriction: MAX 250KT IAS until track BS 129BRG.
- SANDY 1B speed restriction: MAX 240KT IAS until track BS 129BRG.
- ATS surveillance required.